

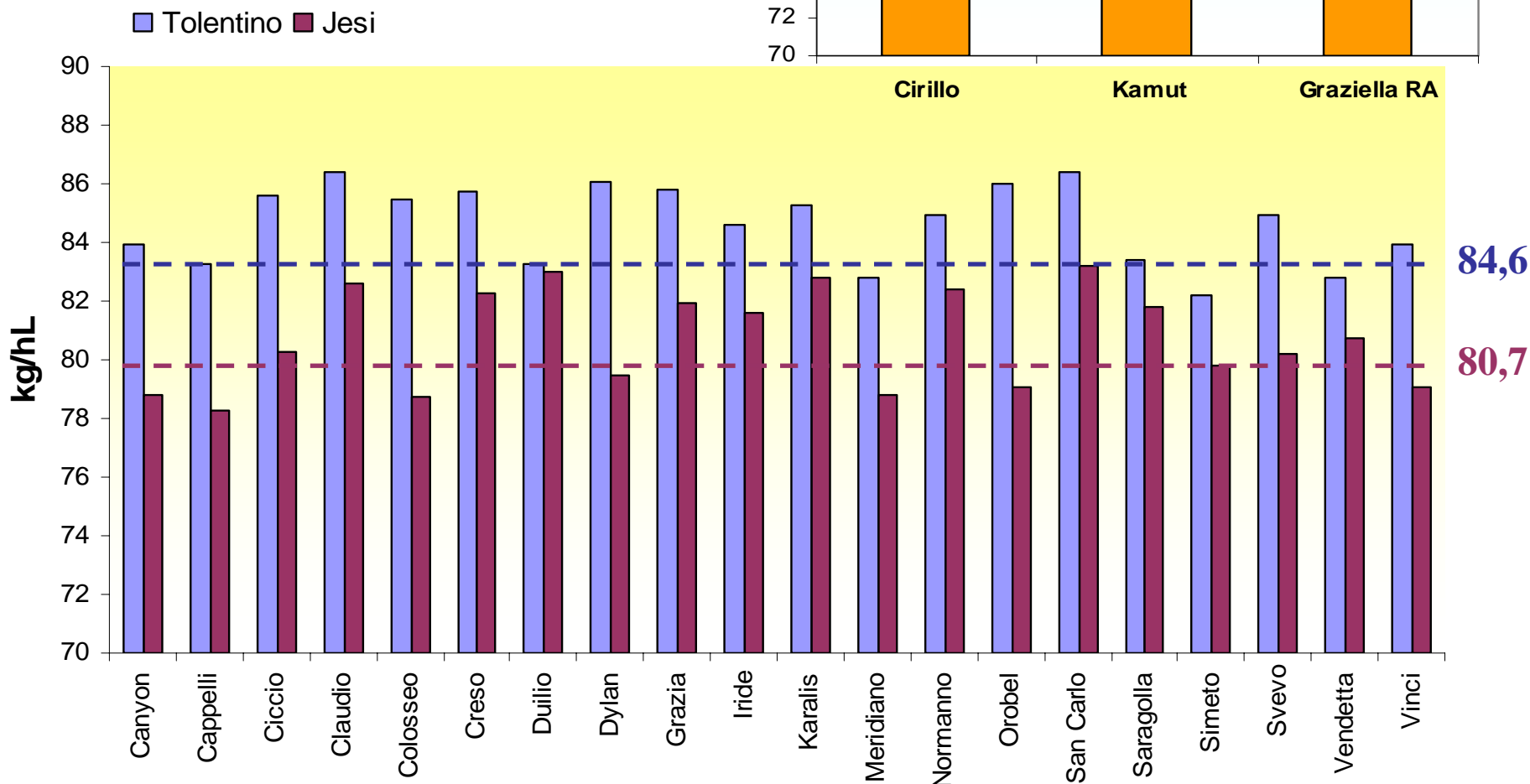
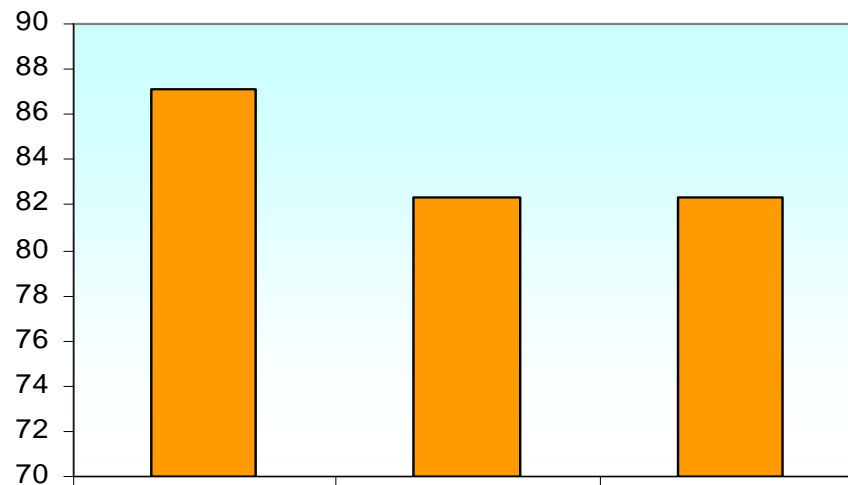


# **PASTA ALIMENTARE DA AGRICOLTURA BIOLOGICA: confronto varietale e prove di pastificazione per attivare una filiera specifica**

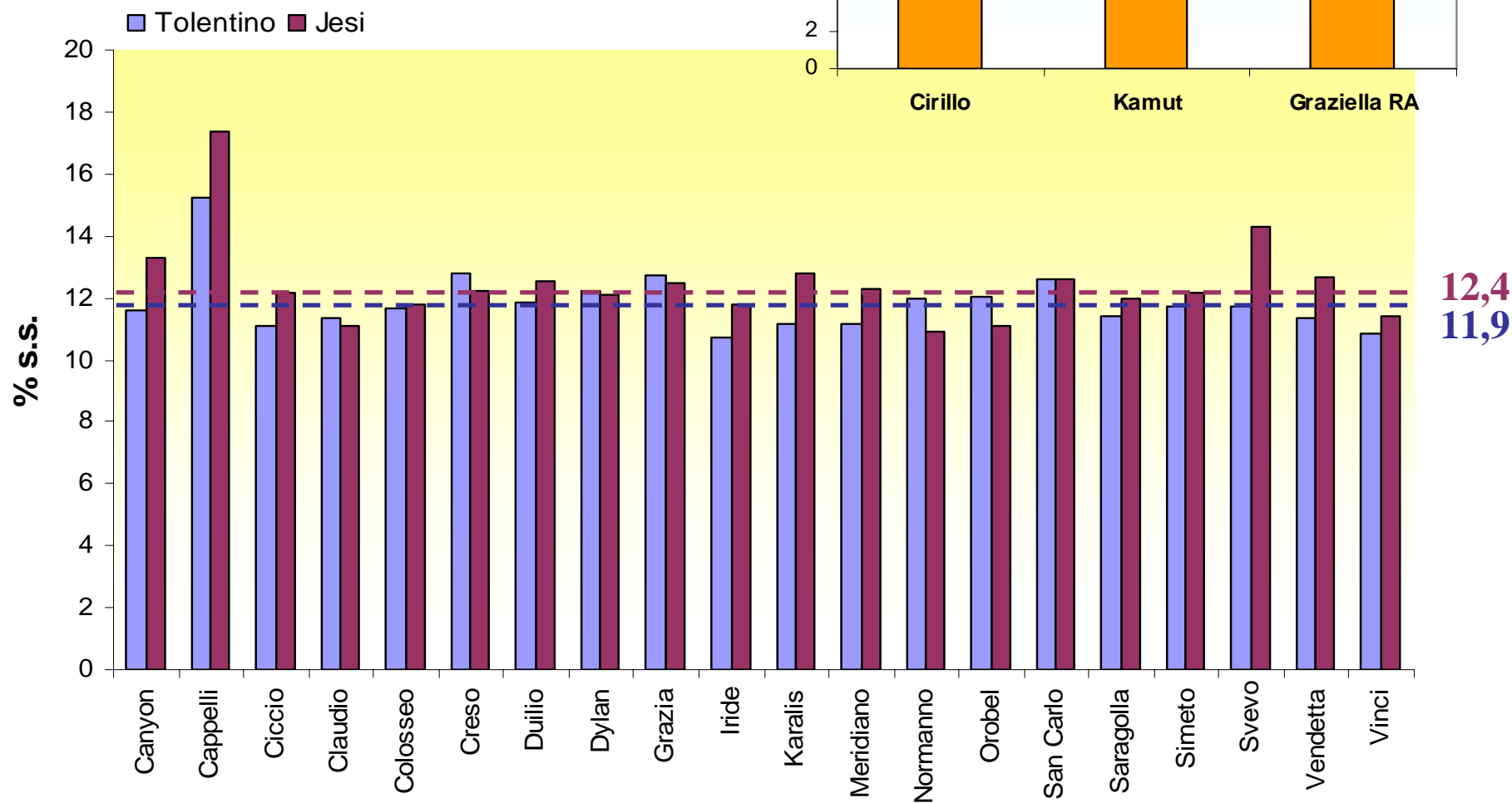
**Primi risultati qualitativi  
prove sperimentali**

**(campagna 2006/07)**

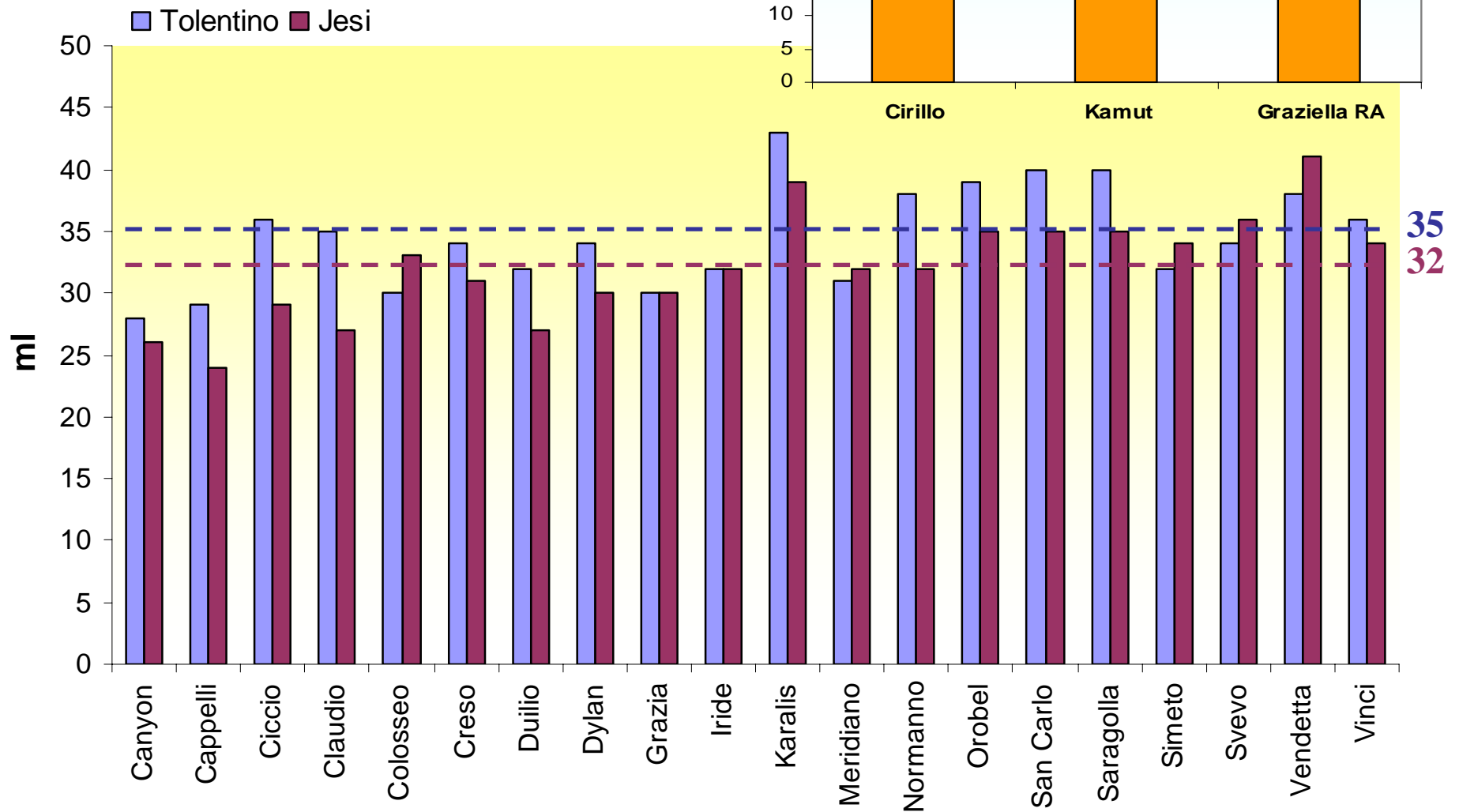
# Peso Ettolitrico dei campioni in prova



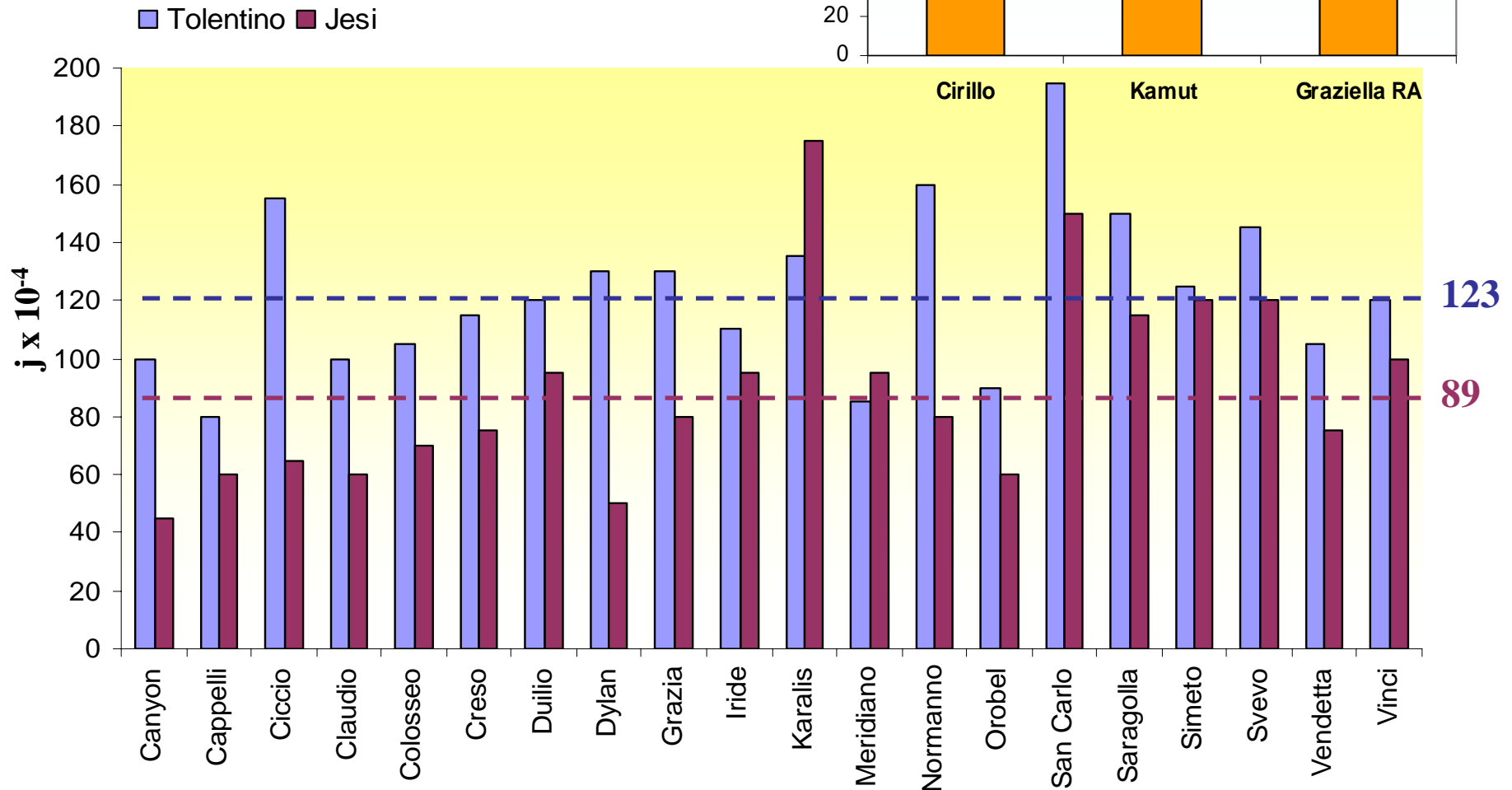
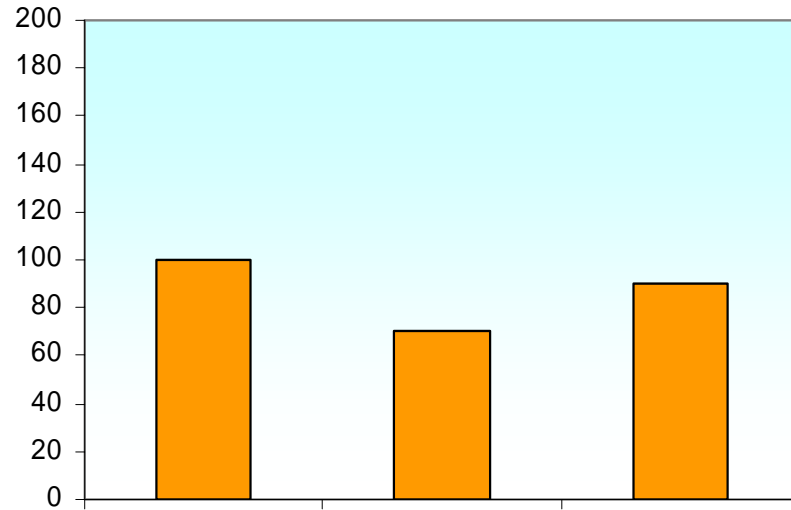
# Contenuto proteico della granella dei campioni in prova



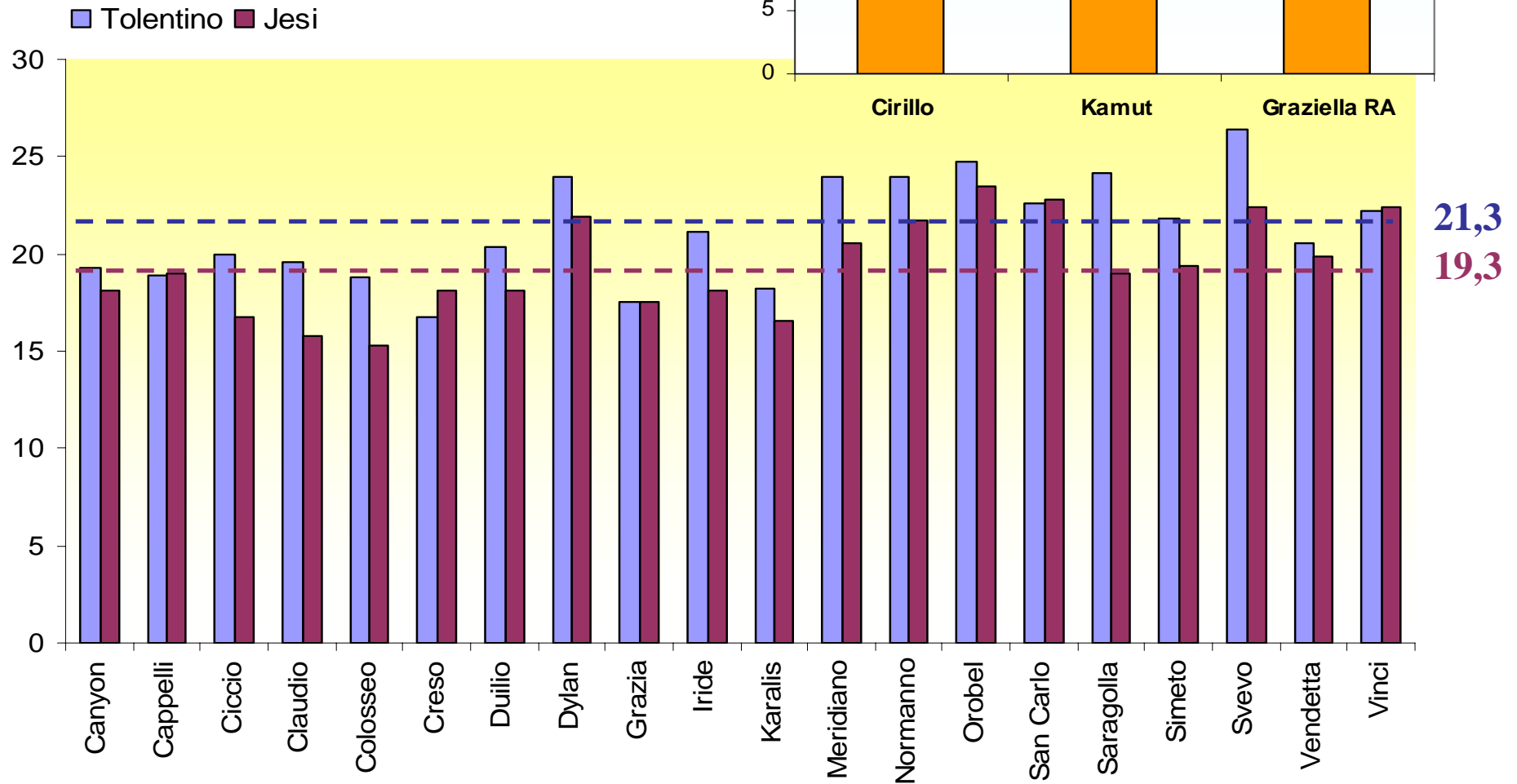
# SDS dei campioni in prova



# W alveografico dei campioni in prova



# Indice di giallo dei campioni in prova



# Qualità in cottura della pasta prodotta con i campioni in prova

